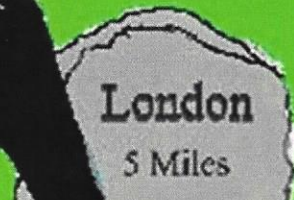


PEACEHAVEN **PLAYERS**  
Theatre Group

# DICK WHITTINGTON

*A Pantomime by  
GRAHAM BARRACLOUGH*



Friday	Saturday	Saturday	Saturday	Saturday
<b>30<sup>th</sup></b>	<b>1<sup>st</sup></b>	<b>1<sup>st</sup></b>	<b>8<sup>th</sup></b>	<b>8<sup>th</sup></b>
Nov 7.00 pm	Dec 2.00 pm	Dec 6.00 pm	Dec 2.00 pm	Dec 6.00 pm



PROGRAMME £1

# meridian

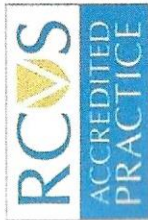
VETERINARY PRACTICE

## OUR FACILITIES

We're proud of our purpose-built facilities which include an operating theatre, x-ray & ultrasound suite, laboratory, and separate cat and dog recovery wards

## PET HEALTH CLUB

**Save 10%** on your vet bills and spread the cost of preventative healthcare in affordable direct debits



CAR PARK AT REAR  
FREE WEEKLY DELIVERIES  
HOME VISITS AVAILABLE

☎ 01273 585386

➔ [www.meridianvets.co.uk](http://www.meridianvets.co.uk)



### Refer a friend

Receive £10 credit on your account

Visit our website for news and advice, pet registration, and prescription requests



11 Edith Avenue  
Peacehaven, BN10 8JB

Monday to Thursday: 8am-6pm  
Friday: 8am-7pm Saturday: 8am-4pm

# Welcome



Hello and welcome to our panto—Dick Whittington.

As ever, the cast, the Harlequin dancers and all the people behind the scenes, have worked very hard to bring this production together, but of course we also had a lot of fun.

This year the panto has been an interesting experience, being co-director as well as appearing in the show! It has been brilliant working with my co-Director, Nasim Chillcott.

Don't forget to boo the baddies and cheer our heroes, which all makes the Christmas panto extra special.

Now sit back, relax and enjoy the show.

**Mandie Fairhall**

**Co-Director and Chairperson**

# Co-Director's Notes



Welcome to our tale of love, villainy and vermin!

Dick is out to seek his fortune, along with his best friend, Thomas the cat. Dick meets the love of his life, Alice, in London, but the nasty rats of London don't like Thomas and plot to get rid of Dick and his cat, resulting in Dick and Thomas making a quick exit abroad.

Will the dastardly rats of London get the better of Dick?

Will Dick and Thomas survive the high seas?

Will Dick ever see Alice again?

Will Sarah the Cook and Idle Jack ever make sense?

It has been great fun working alongside Mandie as Co-Director and I'm sure you are in for a treat.

The cast and crew have been brilliant as usual, and special thanks to Janice Turner as main choreographer and Charlotte and team for the inspirational dances from the Harlequins. Many thanks also to our musical director, Ricky Horscraft, for his patience!

**Nasim Chillcott, Co-Director**

## Advertisers

We would like to acknowledge and thank the kind support given by all our advertisers, new and old, and look forward to their continued support.

[www.arletteflorist.com](http://www.arletteflorist.com)

## Arlettes Florist

**01273 584666 or 583704**

Haven Scent Floral Gifts for all Occasions

Celebrations

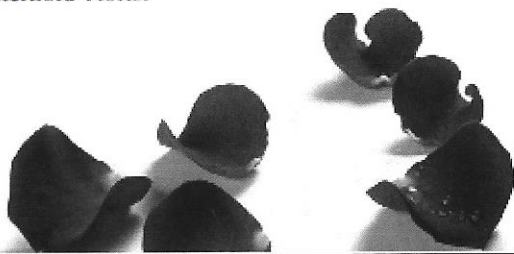
Floral Tributes

Wedding Flowers

Local deliveries – Peacehaven, Newhaven,

Saltdean and Rottingdean

Interflora Florist





1722

## Dick Whittington lived!

Sir Richard Whittington, unlike other pantomime stalwarts, really did exist. However it's unlikely that anyone actually called him Dick once he became Lord Mayor of London.

He did come up to town from Gloucester, where he was born in 1354, to seek his fortune. As the third son to a wealthy family he had no prospect of an inheritance. When his father died young Dick needed to find a job. It is unlikely he had to walk all the way with his belongings in a sack over his shoulder. An apprenticeship to the merchant Ivo Fitzwarren was arranged.

He proved to be a successful merchant, a "mercier", importing luxury fabrics and exporting English woollen cloth. He made a lot of money and then increased his wealth further by loaning vast sums to three Kings, Richard II and Henrys IV and V as well as other nobles. They needed lots of money and he knew how to set the rate of interest in his favour.

He did marry Alice Fitzwarren who was the daughter of his former boss but it was hardly a whirlwind romance. He was 48 when they married in 1402. She was 24. Unfortunately she died only 9 years later and they did not have any children. He was buried next to her when he also passed away.

He died in 1423 at the age of 69 in his beloved London having been Mayor 4 times. The King first appointed him in June 1397 when the incumbent died but was subsequently elected by the citizens of London on three occasions.

During his life he was a public benefactor. He paid for the installation of sewers in some poor districts of the capital and had a hospital ward set up for unmarried mothers. He also financed the building of public drinking fountains across the city.

As he had no heirs he left his fortune to charity and the Sir Richard Whittington Trust continues to do good work to this day.

The story we know today first appeared some two hundred years later at the time of Elizabeth I. This is the first mention of any cat. One piece of good news is that London was not so overrun by rats that a supercat was needed to rescue it. The bad news is that there is no record of Sir Dick ever owning any sort of cat.

# The Players..



Georgie Bancroft



Kara Fairhall



Tony Garwood



Judith Foot



Nazim Chillcott



Lynn Enever



Roni Bromley



Gillian Veck





Jenny Day



Mandie Fairhall



Monika Stankova



Christine Twibill



Zubin Chillcott



Omid Chillcott



Holly Klassen



Imogen Arthur



Grace Collier



Jess Collier

# Behind the Scenes ...



Lynne Holman



Michele Harden



Alisha Berry



Chris Fairhall



Mark Rushton

The Peacehaven Players  
would like to thank  
**Anne and Keith Briffett of**  
**The Peacehaven Directory and The Deans Magazine**  
for their continued support

# DICK WHITTINGTON

## CAST LIST

Dick Whittington	Georgie Bancroft
Thomas (a Cat)	Kara Fairhall
Sarah (a Cook)	Tony Garwood
Idle Jack	Judith Foot
Mrs Fitzwarren	Nasim Chillcott
Alice (her daughter)	Lynn Enever
King Rattus	Roni Bromley
Norma (the Narrator)	Gillian Veck
Captain Kettle (a Sailor)	Jenny Day
Bosun Shine (another sailor)	Omid Chillcott
Sheikh Yaboddi	Nasim Chillcott
Mel Belle (a Belle of Shoreditch)	Mandie Fairhall
Nell Belle (a Belle of Shoreditch)	Monika Stankova
Rochelle Belle (a Belle of Shoreditch)	Jenny Day
P. C. Bobby Dazzler (a Rozzer)	Mandie Fairhall
Stage Manager	Alisha Berry
Watchman	Mandie Fairhall
Quasimodo	Nasim Chillcott
Popcorn Vendor	Gillian Veck
Norma's mum	Nasim Chillcott
A Sandwich	Omid Chillcott
Couriers:	Lynn Enever and Judith Foot
A Londoner	Christine Twibill
Ralphie (a rat)	Zubin Chillcott
Raylene (a rat)	Holly Klassen
More Rats	Imogen Arthur, Grace Collier & Jess Collier

# Production

Stage Manager	Michele Harden
Stage Crew and Set Design	Alisha Berry, Chris Fairhall and Eddie Turner
Wardrobe	Roni Bromley
Sound and Lighting	Sussex Events Ltd

# Credits

Script by	Graham Barraclough
Co-Directors	Mandie Fairhall and Nasim Chillcott
Assistant Director	Roni Bromley
Musical Director	Ricky Horscraft
Show Band	Ricky Horscraft (keyboard) Neil Rocks (drums)
Prompt	Michelle Roman
Choreography	Janice Turner and Mandie Fairhall
Front of House	Lynne Holman and her Front of House Team
Programme Cover Design	Tony Garwood
Programme	Lynn Enever
Ticket Sales	Mark Rushton

**With special thanks to:**

**Cubitt & West, Estate  
Agents, Peacehaven**

and

**Jarlands Estates,  
Peacehaven**

for their assistance in  
promoting our show

# Harlequins...



Erin Falconer



Josie Linscer



Chloe Harwood



Emily Martin



Maddie Turner



May Wells



Imogen Jones



Amy Martin



Mia Higton



Freya Higton



Caitlin Davies



Hayley Lewis



Leona Lewis



Madison Vernon



Katelyn Harber



Natalie Gilbert



Maisie Fox



Georgia Claxton



Scarlett Banks



Millie Cross



Isabella Haigh



Star Hayes

# Scene List

## ACT ONE

Scene 1     The City of London

Scene 2     A Lonely Place

Scene 3     The Docks

## ACT TWO

Scene 1     On Board Ship

Scene 2     A Foreign Shore

Scene 3     The Sheikh's Palace

Scene 4     London Town

Scene 5     The Guildhall



# Musical Numbers

## ACT ONE

The Greatest Show	Company
Baby Shark	The Three Belles
Rat Rap	King Rattus and Ratlings
Hard Days Night	Thomas and Chorus
Everybody Wants To Be A Cat	Dick, Alice, Sarah, Jack and Mrs. Fitzwarren
Foot Tapper	King Rattus and Ratlings
Down By The Docks	Chorus
It's Not Where You Start	Chorus

## ACT TWO

Rag Mop	Dick, Sarah, Alice and Jack
From Now On	Company
Baby Shark	Sarah, Jack, Belles and Audience
The Greatest Show	Company

# Want a selfie with your favourite character?



No charge but we would love it if you shared your photo using

**#playersdw**

**We'll be in the foyer after the show.**



*Harlequin Studios*

[www.harlequinstudios.co.uk](http://www.harlequinstudios.co.uk)  
[info@harlequinstudios.co.uk](mailto:info@harlequinstudios.co.uk)

Discover  
your **Potential**

The number one dance and drama  
studio in Peacehaven, Sussex

ITDA dance exams

Dancing displays

Adult classes available

Dance and drama classes available  
for all ages and abilities

For more info, call Janice on: 07981 925742

Classes include:

Ballet

Modern

Contemporary

Tap

Jazz

Latin

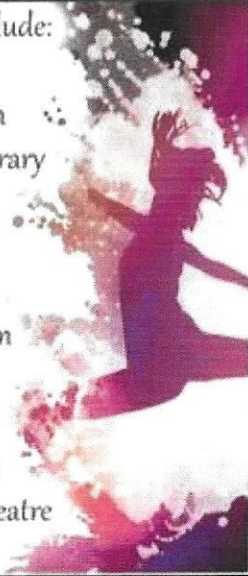
Ballroom

Street

Disco

Drama

Musical Theatre



The Peacehaven Players

would like to thank

# The House Project

for their very kind donation to

advertising costs

# BABY SHARK

Baby Shark, do do do do do do,  
Baby Shark, do do do do do do,  
Baby Shark, do do do do do do,  
Baby Shark

Mummy Shark, do do do do do do,  
Mummy Shark, do do do do do do,  
Mummy Shark, do do do do do do,  
Mummy Shark

Daddy Shark, do do do do do do,  
Daddy Shark, do do do do do do,  
Daddy Shark, do do do do do do,  
Daddy Shark

Grandma Shark, do do do do do do,  
Grandma Shark, do do do do do do,  
Grandma Shark, do do do do do do,  
Grandma Shark

Grandpa Shark, do do do do do do,  
Grandpa Shark, do do do do do do,  
Grandpa Shark, do do do do do do,  
Grandpa Shark

Let's go hunt, do do do do do do,  
Let's go hunt, do do do do do do,  
Let's go hunt, do do do do do do,  
Let's go hunt

Run away, do do do do do do,  
Run away, do do do do do do,  
Run away, do do do do do do,  
Run away

Safe at last, do do do do do do,  
Safe at last, do do do do do do,  
Safe at last, do do do do do do,  
Safe at last

It's the end, do do do do do do,  
It's the end, do do do do do do,  
It's the end, do do do do do do,  
It's the end

--ooOoo--

# PEACEHAVEN PLAYERS

*Invite you to*

# The Perfect Wedding

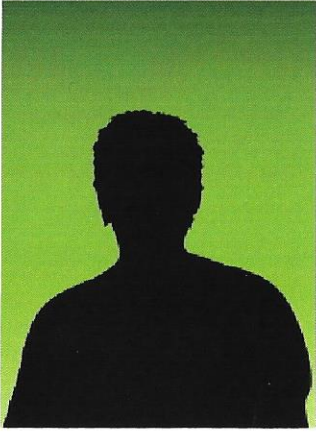
*by Judith Foot*



A brand new comedy  
featuring songs from stage and the charts

Next Summer in The Meridian Centre  
June 6<sup>th</sup>, 7<sup>th</sup> and 8<sup>th</sup> at 7.30 pm

**Tickets from  
Peacehaven Information Office  
Telscombe Civic Centre  
[www.peacehavenplayers.co.uk](http://www.peacehavenplayers.co.uk)**



**YOU?**

Are you a budding actor, singer, designer,  
painter or stage hand?

Why not come and join us, everyone is  
welcome.

For further information e-mail:

**[peacehavenplayers@hotmail.co.uk](mailto:peacehavenplayers@hotmail.co.uk)**

and don't forget to  
'Like' us on Facebook

# About Peacehaven Players

Peacehaven Players are a musical theatre group who stage two shows a year, a major summer production and a pantomime in the winter. We are an open company and new members are always welcome to join us without the need to audition.

Not an actor? We still want to hear from you. Peacehaven Players offers something for everyone, from working backstage to front of house, painting scenery, props, making costumes, or even just general help, there's always something for you to get involved in.

Our main aim at Peacehaven Players is, of course, to have fun. It's of utmost importance that we enjoy what we do, but it's not all about the acting. There's a great social side to being a member of the Players. We hold regular fund raising events such as coffee mornings and car boot sales, which is a great way to get to know everyone and meet even more members of the community. We also get together for meals and nights out for the chance to socialise outside of rehearsals.

## **“The Perfect Wedding” Important Dates**

Introduction to The Perfect Wedding....	7.30pm.....	12th February 2019
Auditions.....	7.30 pm.....	19th February 2019
Rehearsals Start.....	7.30 pm.....	26th February 2019
Dress Rehearsal.....	7.30 pm.....	5th June 2019
Show Dates.....	7.30 pm.....	6th to 8th June 2019

All in Main Hall, Meridian Centre, Greenwich Way, Peacehaven, BN10 8BB

Everyone welcome, no previous experience needed, but you need a good sense of humour.

For further information about being part of this show, contact Judith on: 01273 305824

'Like' us on Facebook



# Previous Shows

## 1998

The Boyfriend

London Town

Cinderella

## 2001

Hello Dolly

Trial by Jury

Aladdin

## 2004

Oklahoma

Babes in the Woods

## 2007

Radio Times

Cinderella

## 2010

Chart Toppers

Aladdin

## 2013

The WOW Factor

Cinderella

## 2016

Crystal's Department Store

Snow White & The Seven  
Dwarfs

## 1999

Fiddler on the Roof

Stepping Out

Sleeping Beauty

## 2002

Kiss me Kate

Dick Whittington

## 2005

Blitz

A Night at the Musicals

Snow White

## 2008

Anything Goes

Sleeping Beauty

## 2011

The Wiz

Snow White

## 2014

Fly Me!

Sleeping Beauty

## 2017

Oliver!

Beauty & The Beast

## 2000

Calamity Jane

That's Entertainment

Wizard of Oz

## 2003

Oliver

Variety Showtime

Jack and the Beanstalk

## 2006

My Fair Lady

Robinson Crusoe

## 2009

Thank You For The Music

Little Bo Peep

## 2012

Show Stoppers

Beauty And The Beast

## 2015

Nonsense

Aladdin

## 2018

Who Killed The Pop Star?

# Thank YOU for your continued support of Peacehaven Players

As they say, actions speak louder than words, so we'd like to offer you an 'early bird' 10% discount off our next performance.

To claim your 'early bird' 10% discount, log onto

[www.peacehavenplayers.co.uk](http://www.peacehavenplayers.co.uk)

until 18th March 2019

Click the link to buy tickets, on the checkout page, enter promotional code

## WEDD19

and 10% will automatically be discounted from your ticket order.

## Want More!

Join our mailing list to receive special discounts, early bird vouchers and much more. You could save up to

# 35%

Send your email to

[peacehavenplayers@hotmail.co.uk](mailto:peacehavenplayers@hotmail.co.uk),

with "Mailing List" as the subject line.

## Patrons

Peacehaven Players would like to express our sincere thanks to our loyal patrons who have supported us over the years. Our current patrons are:-

### Sue Fairhall and Chris Fairhall

As a community group the support we receive from you, our audience members, and our patrons is vital for the future of Peacehaven Players. If you have enjoyed our shows and would like to show your support without becoming an active member, then why not become a patron?

Becoming a patron gives you the benefits of free tickets, concessions, and a sneak peak at shows and "behind the scenes" action at special rehearsal evenings.

**For an application form, or more information, please see our front of house team or contact us on: 01273 580399**

# PEACEHAVEN PLAYERS

Theatre Group 

at  
**Christmas 2019**

PEACEHAVEN PLAYERS

will present



# DICK WHITTINGTON and HIS CAT

(The Next Story)



We know that it all turned out well for Dick,  
but when he retired, he began to get sick.

The Doctor advised him to live by the Sea -  
"I'll go to Peacehaven" to the Doctor said he.  
"Good move", said the doc, "the sooner the better"  
and the Doctor's advice was put in a letter.

Dick needed a house and conveyancing done,  
so he called LLB and found just the one  
who helped him along with legal stuff and all that,  
Lynn Parris was as good as Dick's former cat.

She saved him a fortune in fees and advice  
- he got a great service at a very good price.  
The move was a good one, Dick was feeling less ill  
but he was a wise man and then made his Will.

Sarah Barry visited Dick at his home  
- her legal advice was second to none.  
So Dick enjoyed many years in Peacehaven  
until he and his new cat went gently to heaven.

Call Lynn or Sarah at Lawson Lewis Blakers Solicitors  
01273 582680

[www.lawsonlewisblakers.co.uk](http://www.lawsonlewisblakers.co.uk)

